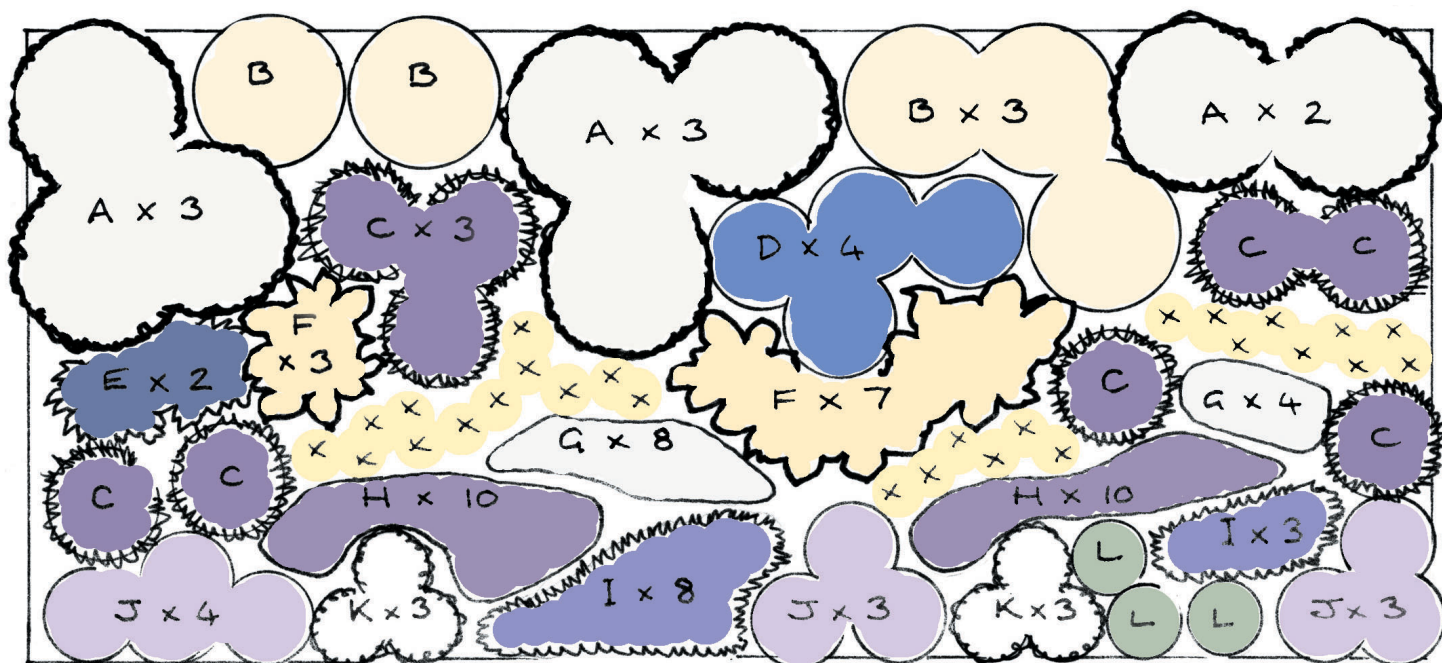


# A Sunny Border in Cool Colors

Thirteen plants in a border to help take the heat out of a long summer day.

24'

↑  
N



COOL COLORS, those in shades of blue, purple, lavender, white, cream, grey, and, silver are beloved for their soothing refreshing effects. They create a feeling of calm, and, in the deeper shades, add visual depth, making distances recede. In this planting, the darker colors are set off by the crisp whites of the daisies 'Becky' and 'Snow Lady' along with the glaucous tones of the dusty miller 'Silver Brocade'

and the Russian sage (*Perovskia*).

But no planting can survive on flowers alone, there must be interesting shapes in a plant's overall form, in its leaves, and, yes, in its flowers. Here, the mounds of catmint (*Nepeta*) and bellflower (*Campanula*), with their handsome flowers (see detail of C. 'Telham Beauty', above left), are set off by the spikes of foxglove

		TOTALS
A	CHRYSANTHEMUM X S. BECKY	8
B	CEPHALARIA GIGANTEA	5
C	NEPETA SIBIRICA	9
D	PEROVSKIA ATRIPLICIFOLIA	4
E	ECHINOPS R. RUTHENICUS	2
F	PHLOMIS RUSSELLIANA	10
G	CAMPANULA P. GRANDIFLORA ALBA	12
H	CAMPANULA P. TELHAM BEAUTY	20
I	NEPETA X FAASSENII	11
J	CALAMINTHA NEPETA NEPETA	10
K	CHRYSANTHEMUM X S. SNOW LADY	6
L	ARTEMISIA S. SILVER BROCADE	3
x x	DIGITALIS GRANDIFLORA	30
x x x	TO FILL	

(*Digitalis*) the spiny orbs of the globe flower (*Echinops*), with their jagged leaves, and the spires of tiered yellow flowers of the phlomis. The sizeable cluster of the shrubby Russian sage adds narrow, tall wands of pale blue flowers that top finely cut grey-green leaves. ♡